



# **LED LINEAR DOWNLIGHT**

**MODEL: EPI-DL10W**

Precise and homogeneous illumination, high flexibility to any architectural lighting concept .

# OVERVIEW

- \* Innovative modern design, high-end flexible decorative lamps.
- \* UGR<13, advanced anti-glare reflectors with beam angle 15 /30 /45 degree optional, available for variety applications.
- \* Deep recessed, great light and high visual comfort, excellent lighting effect.
- \* LM80 approved Osram LEDs with lifetime more than 50,000 hours.
- \* Innovative die-casting aluminum radiator design, better heat dissipation performance.
- \* Designed to meet recommend luminance requirements for precise lighting in commercial lighting like shopping mall, showcase etc.

PHYSICAL DATA	
Dimension	L145*W45*H50 mm
Hole Size	35*138 mm
Lamp N.W.	239 g
PCB Thermal Conductivity	1.0WMK
Material	Aluminum Profile + Reflector + Lens
Color	Black /White /Customized

ELECTRICAL DATA	
Wattage	10W
Power Factor	PF>0.9
Voltage	110VAC
Driver	Flicker-free
Output Efficiency	>90%
Surge Protection	>2.5KV

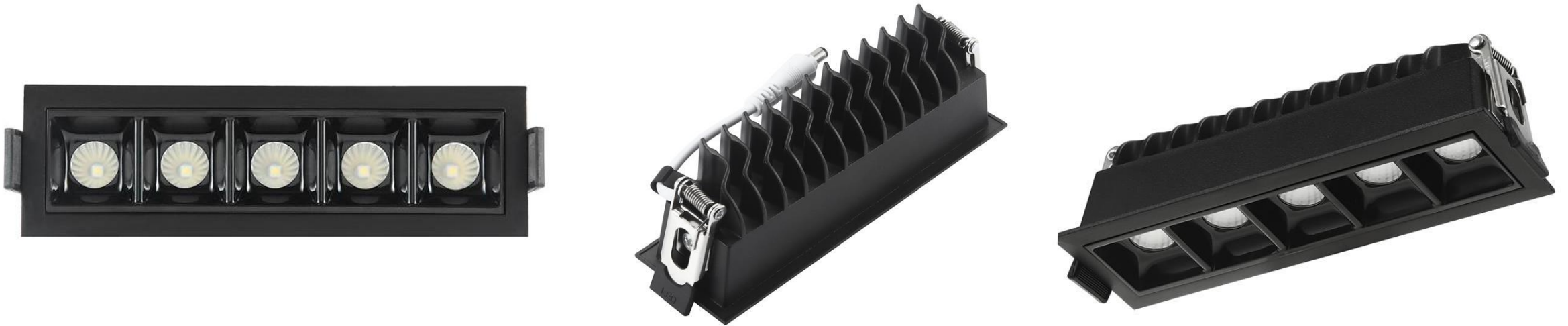
OPTICAL DATA	
Lumen Flux	>750LM
Lamp Efficacy	>75Lm/W
LEDs	Osram (LM80)
CRI	>80 / >90
CCT	3000K /4000K /5000K /6500K
UGR	<13
Beam Angle	15 /30 /45 Degree

LIFE DATA & OPERATING DATA	
Lifetime of Lamp	>50,000 hours (L70)
Lumen Maintenance	Calculated L70 @25°C ambient in Hours>72000 H
Warranty	3 Years
Working Temperature	-15°C+50°C
Recommend Install Height	<3M

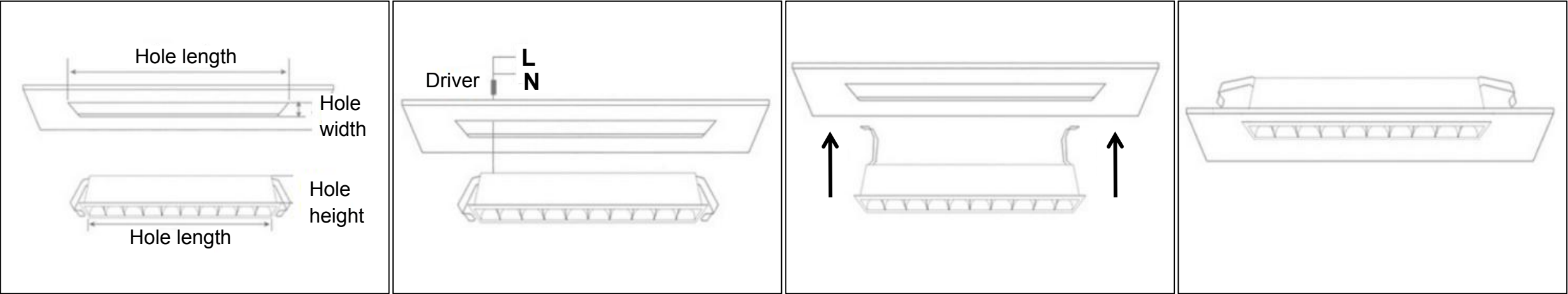
## APPLICATION

Lighting area like the Residential lighting-home decoration, dinning room, hallway; Commercial lighting-shopping mall, Jewelry shop, hotel, club; Exhibition center lighting-museum, concert hall, art gallery etc.

---



# INSTALLATION



- 1. Make sure the position, cut out the suitable hole size.
- 2. Connect the driver with the wire.
- 3. Push the buckle, put the lamp into the hole, upward install.
- 4. Finish the installation.

# PACKING

Watts	Lamp Size	QTY/CTN	Box Size	CTN Size	N.W./CTN	G.W./CTN	CBM
10W	105*45*50 MM	50 PCS	75*60*170 MM	40*32*34 CM	11.95 KG	13.60 KG	0.044