



LED BULB

MODEL: EPI-LB-12W

LED Bulb Lighting is the most prevalent light source among
Residential lighting, perfect fits to any fixture.

EPCOM

OVERVIEW

- * LM80 approved Philips SMD2835 LEDs with lifetime more than 30,000 hours.
- * High brightness, lumen efficacy up to 100Lm/W.
- * PA plastic coated aluminum material, great heat dissipation.
- * Easily install into the standard fixture.
- * 2 years warranty, 30,000 hours reliable lifespan.
- * 2.5KV Surge Protection, avoiding damage caused by voltage fluctuation and lightning strike.



PHYSICAL DATA	
Dimension	D180*145 mm
Lamp N.W.	80 g
LED Chip PCB	Aluminum
Material	PA Plastic coated aluminum + PC Cover
Base	E26 /E27 /B22
IP Rating	IP20

ELECTRICAL DATA	
Wattage	12W
Power Factor	PF>0.95
Voltage	110VAC
Driver	Flicking
Output Efficiency	>90%
Surge Protection	>2.5KV

OPTICAL DATA	
Lumen Flux	>1200LM
Lamp Efficacy	>100Lm/W
LEDs	Philips SMD2835 (LM80)
CRI	>80
CCT	3000K /4000K /5000K /6500K
SDCM	<5
Beam Angle	220 Degree

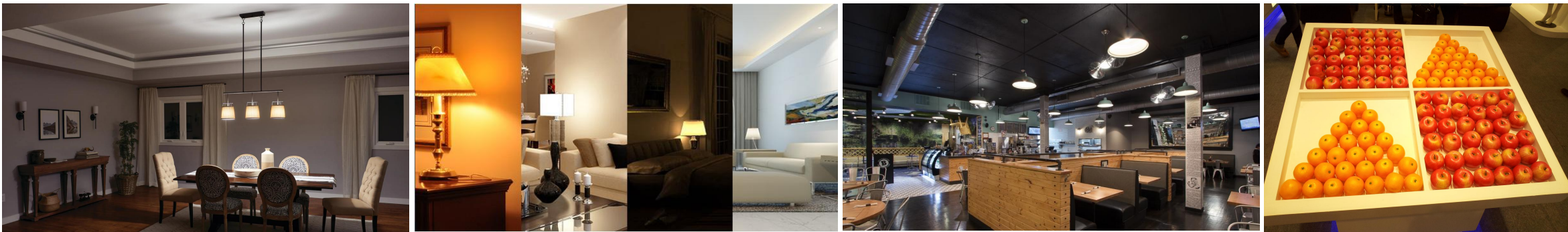
LIFE DATA & OPERATING DATA	
Lifetime of Lamp	>30,000 hours (L70)
Lumen Maintenance	>90% after 6000 hours
Warranty	2 Years
Working Temperature	-15°C+50°C
Recommend Install Height	<3M

PRODUCT STRUCTURE



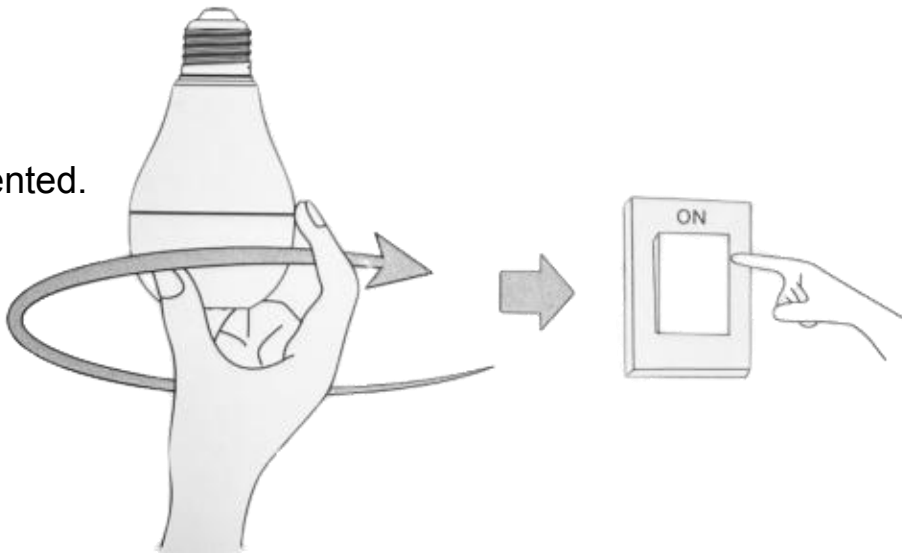
APPLICATION

Lighting area like the home lighting-living room, corridor, bedroom or commercial lighting-bar, restaurant, cafe etc.



INSTALLATION

- 1. Before installation, power supply must be shut down to ensure safety.
- 2. Please get the LED Bulb up and firmly screw it into a lamp holder, with clockwise oriented.
- 3. Please hold the bulb body, rather than the cover to avoid the breakdown
- 4. Toggle the wall switch to turn on the bulb
- 5.Do not operate with traditional dimmer, electric switches and remote controls.
- 6. Use only in specified nominal voltage and temperature range.



PACKING

Watts	Bulb Size	QTY/CTN	Box Size	CTN Size	N.W./CTN	G.W./CTN	CBM
12W	Φ80*145 MM	50PCS	82*82*147 MM	43*43*32 CM	4.0 KG	5.20 KG	0.059